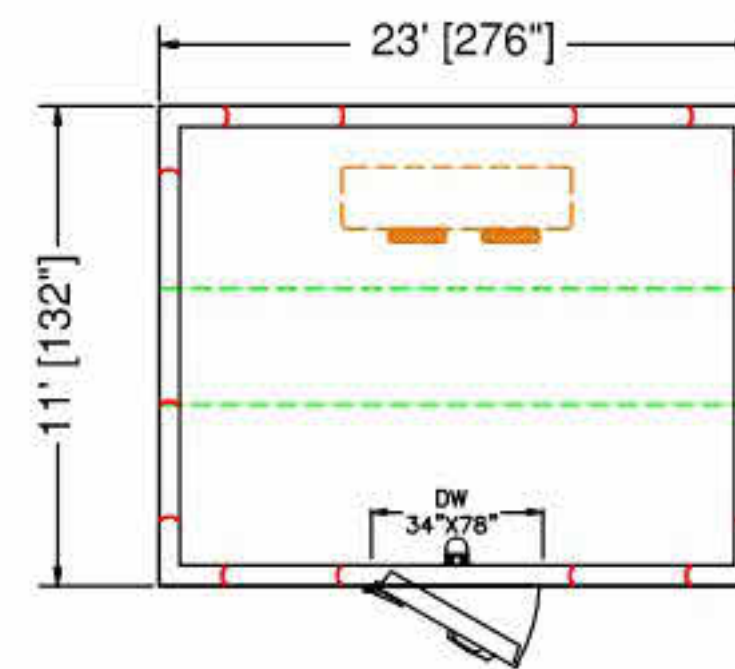


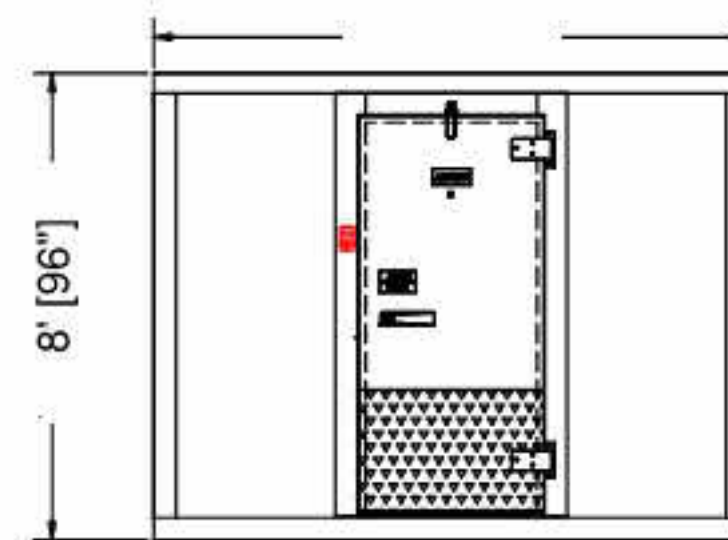
PLAN VIEW
RIGHT HINGE
SELECT ☐



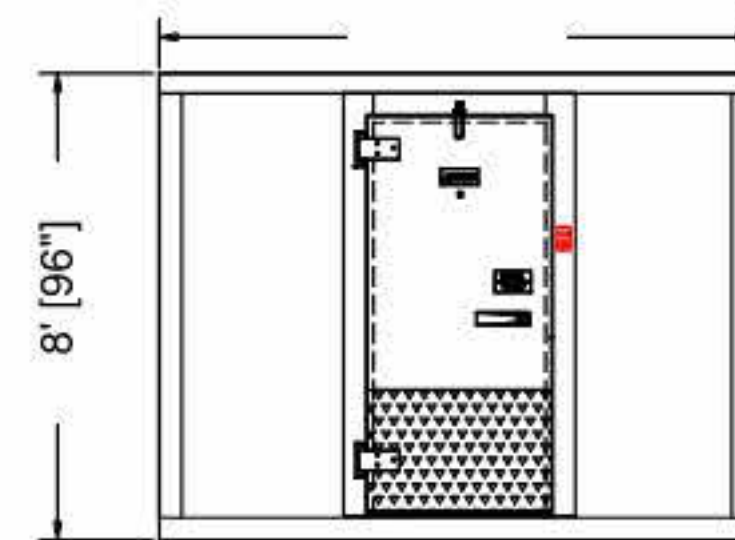
PLAN VIEW

LEFT HINGE

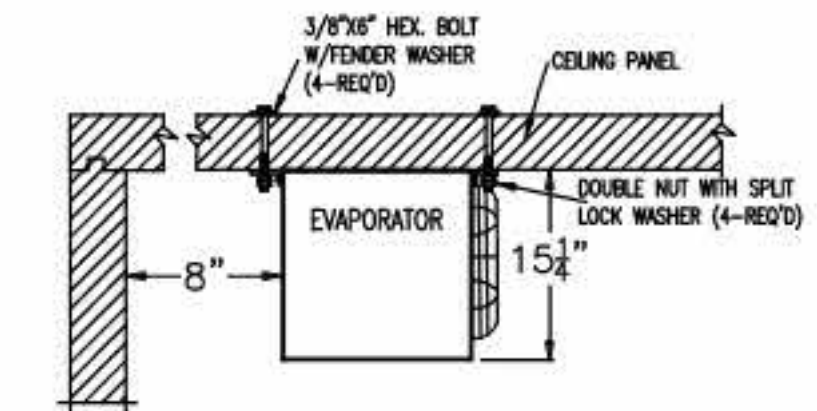
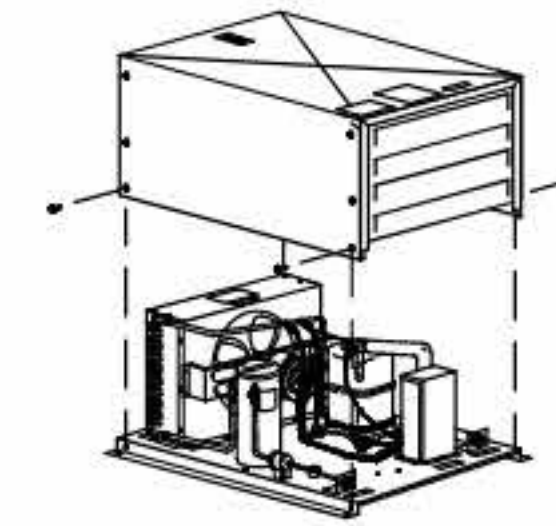
SELECT ☐







ELEVATION
RIGHT HINGE



ELEVATION
LEFT HINGE



PRODUCT SPECIFICATIONS	
MODEL:	BL108-F-R
WALK-IN SPECIFICATION	
INTERIOR/EXTERIOR FINISH	26 GAUGE MILL EMBOSSED ACRYLUME OR 26 GAUGE STUCCO EMBOSSED GALVANIZED STEEL
ELECTRICAL (VOLTS/Hz/PH)	115/60/1
MAX AMP.	0.8
EVAPORATOR SPECIFICATION	
ELECTRICAL (VOLTS/Hz/PH)	230/60/1
AMPS	10.8
WEIGHT (LBS)	58
CONDENSOR SPECIFICATION	
ELECTRICAL (VOLTS/Hz/PH)	208-230/60/1
AMPS	32.2
WEIGHT (LBS)	219
WALK-IN AND REFRIGERATION FREIGHT	
TOTAL SHIPPING WEIGHT (LBS)	1453
MAXIMUM PALLET SIZE	48" X 120" X 102" HIGH
NUMBERS OF PALLETS	2

MODEL: BL108-F-R	<div style="display: flex; justify-content: space-between;"> <div> <p>CUSTOMER APPROVAL</p> <p>DATE: _____</p> <p>SIGNATURE: _____</p> </div> <div> <p>CONFIDENTIAL</p> <p>THE DRAWINGS, TECHNICAL DATA, AND ALL OTHER INFORMATION SET FORTH IN THIS DOCUMENT COMPRISE TRADE SECRETS AND CONFIDENTIAL INFORMATION THAT IS THE EXCLUSIVE PROPERTY OF ARCTIC INDUSTRIES, LLC.</p> <p>USE OF SUCH INFORMATION IS LIMITED TO THE PURPOSE FOR WHICH IT WAS PROVIDED AND NO RECIPIENT IS PERMITTED TO USE, COPY, OR DISCLOSE SUCH INFORMATION EXCEPT AS EXPRESSLY AUTHORIZED BY ARCTIC INDUSTRIES, LLC.</p> </div> </div>	<div style="text-align: center;">  <p>WALK-IN COOLERS AND FREEZERS</p> <p>9731 N.W. 114th WAY</p> <p>MIAMI, FL 33178</p> <p>PHONE: (305) 883-5581</p> <p>www.arcticwalkins.com</p> <div style="display: flex; justify-content: space-around; align-items: center;">    </div> </div>
INDOOR-WITH FLOOR		
FREEZER -10°F		
REMOTE PRE-ASSEMBLED REFRIGERATION		